



TUR

Muratpasa Belediyesi SK vs H 65 Höörs HK

0 - 0

00:00



SWE

19 W521 R2 Referees: Lukas Frieser (CZE), Radoslav Kavulic (CZE)
012

Throw-off: 21.10.2018, 15:00
Süleyman Evcilmen Spor ve Sergi Salonu, Antalya / TUR

Match Statistics Overview

| Muratpasa Belediyesi SK (TUR) | | H 65 Höörs HK (SWE) |
|-------------------------------|--------------------------|---------------------|
| Total | | Total |
| 0 | Goals | 0 |
| 0 | 7m Goals | 0 |
| 0 | 7m Shots | 0 |
| 0% | 7m Percentage | 0% |
| 0 | Yellow Cards | 0 |
| 0 | 2 min Suspension | 0 |
| 0 | Red Cards | 0 |
| 0 | Powerplay goals | 0 |
| 0 | Shorthanded goals | 0 |
| 0 | Most goals in succession | 0 |
| 0 | Team Timeouts | 0 |



Player Statistics: Muratpasa Belediyesi SK (TUR)

| Player | | Total | All Goals/Shots | | | | | | | | Punishments | | |
|---------------------------|----------|----------|-----------------|----------|----|------|----|----|------|----|-------------|----|----|
| No. Name | Position | Goals | HT1 | HT2 | 7M | 7M % | 6M | 9M | Wing | UP | YC | 2m | RC |
| 5 TÜRKYILMAZ Beyzanur | | 0 | 0 | 0 | | | | | | | | | |
| 6 KARASLAN Betül | | 0 | 0 | 0 | | | | | | | | | |
| 7 ÖZEL Yeliz | | 0 | 0 | 0 | | | | | | | | | |
| 8 AKALIN Cansu | | 0 | 0 | 0 | | | | | | | | | |
| 10 HOSGÖR BINBOGA Digdem | | 0 | 0 | 0 | | | | | | | | | |
| 11 BOZDOGAN Döne Gül | | 0 | 0 | 0 | | | | | | | | | |
| 17 BARANIK Valeriia (RUS) | | 0 | 0 | 0 | | | | | | | | | |
| 20 GRAOVAC Kristina (SRB) | | 0 | 0 | 0 | | | | | | | | | |
| 21 DINÇ Ayse | | 0 | 0 | 0 | | | | | | | | | |
| 23 SAHIN Yasemin | | 0 | 0 | 0 | | | | | | | | | |
| 35 TOPRAK Yagmur | | 0 | 0 | 0 | | | | | | | | | |
| 53 BIRBEN Ecem | | 0 | 0 | 0 | | | | | | | | | |
| 58 DURDU Merve | | 0 | 0 | 0 | | | | | | | | | |
| 61 KILIC Eda Nur | | 0 | 0 | 0 | | | | | | | | | |
| 86 SORMAZ Aysenur | | 0 | 0 | 0 | | | | | | | | | |
| 99 ÖZDEMİR Öznur | | 0 | 0 | 0 | | | | | | | | | |
| Player TOTALS | | 0 | 0 | 0 | | | | | | | | | |

| Officials | | Punishments | | |
|-----------------|--|-------------|----|----|
| No. Name | | YC | 2m | RC |
| A ÜNSAL Birol | | | | |
| B SARPAS Sertan | | | | |
| C BAL Baris | | | | |
| TEAM | | | | |
| TOTALS | | | | |



Player Statistics: H 65 Höörs HK (SWE)

| Player | | Total | All Goals/Shots | | | | | | | | | Punishments | | |
|----------------------------|----------|----------|-----------------|----------|----|------|----|----|------|----|----|-------------|----|--|
| No. Name | Position | Goals | HT1 | HT2 | 7M | 7M % | 6M | 9M | Wing | UP | YC | 2m | RC | |
| 2 JOHANSSON Anna | | 0 | 0 | 0 | | | | | | | | | | |
| 4 KÄLLHAGE Evelina | | 0 | 0 | 0 | | | | | | | | | | |
| 5 RASK Emma | | 0 | 0 | 0 | | | | | | | | | | |
| 6 MÄSSING Mikaela | | 0 | 0 | 0 | | | | | | | | | | |
| 12 WIBERG Jannike | | 0 | 0 | 0 | | | | | | | | | | |
| 13 WINBERG Tilda | | 0 | 0 | 0 | | | | | | | | | | |
| 14 LINDKVIST Emma | | 0 | 0 | 0 | | | | | | | | | | |
| 16 BERGDAHL Gry | | 0 | 0 | 0 | | | | | | | | | | |
| 19 THORLEIFSDOTTIR Kristin | | 0 | 0 | 0 | | | | | | | | | | |
| 20 OLSSON Anna | | 0 | 0 | 0 | | | | | | | | | | |
| 21 HVENFELT Sofia | | 0 | 0 | 0 | | | | | | | | | | |
| 23 AKESSON Hanna | | 0 | 0 | 0 | | | | | | | | | | |
| 24 GULLBERG Ida | | 0 | 0 | 0 | | | | | | | | | | |
| 25 FRANSSON Michaela | | 0 | 0 | 0 | | | | | | | | | | |
| Player TOTALS | | 0 | 0 | 0 | | | | | | | | | | |

| Officials | | Punishments | | |
|----------------------|--|-------------|----|----|
| No. Name | | YC | 2m | RC |
| A MANSSON Ola | | | | |
| B CHIDIAC Jean | | | | |
| C SJÖSTRÖM Mats | | | | |
| D SALOMONSSON Mikael | | | | |
| TEAM | | | | |
| TOTALS | | | | |



Play-by-play 1st half

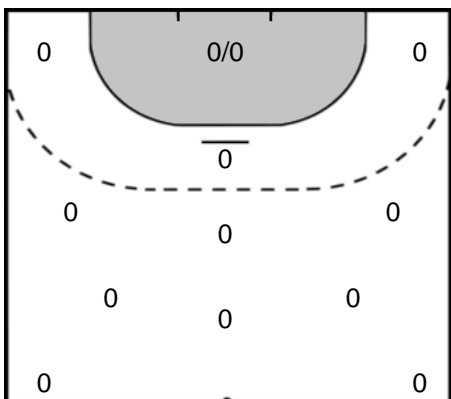
Muratpasa Belediyesi SK (TUR)

H 65 Höörs HK (SWE)

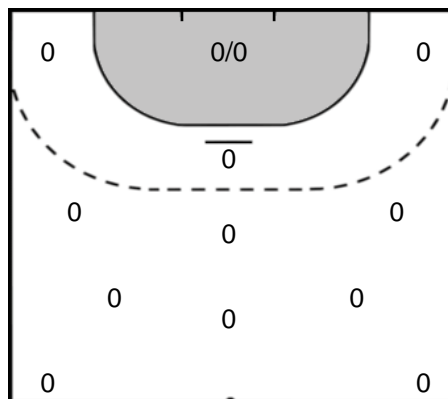


Team Statistics Attack

Muratpasa Belediyesi SK (TUR)

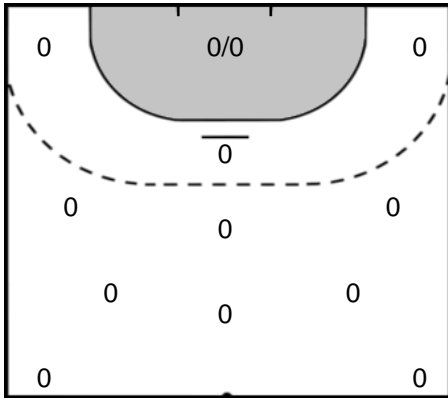


H 65 Höörs HK (SWE)

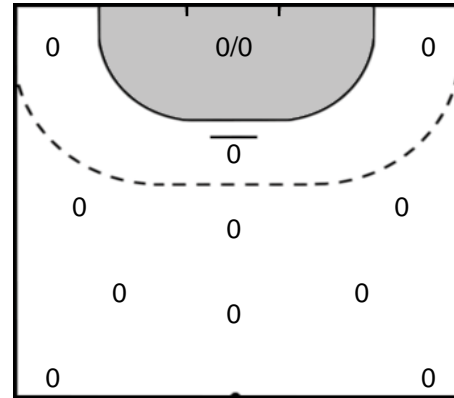


Goalkeeper Statistics

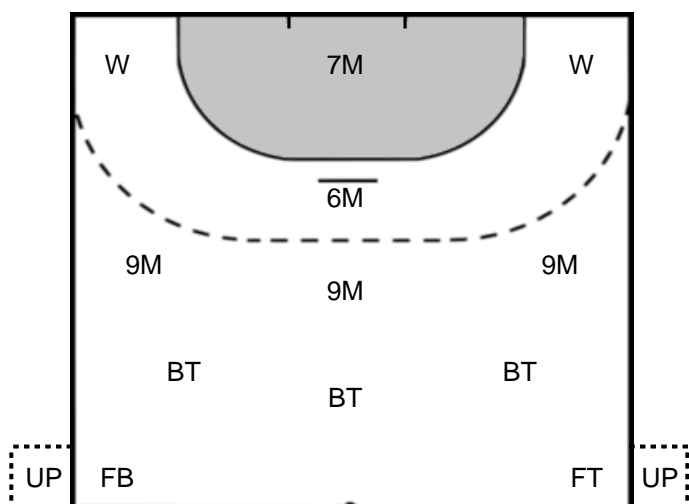
Muratpasa Belediyesi SK (TUR)



H 65 Höörs HK (SWE)



Legend



- %** Efficiency
- Pos.** Position
- 7M** 7-metre Shots
- W** Wing Shots (Right, Left)
- BT** Breakthrough (Right, Center, Left)
- FB** Fast Break
- 6M** 6-metre Shots
- 9M** 9-metre Shots (Right, Center, Left)
- FT** Free Throw
- YC** Yellow Cards
- RC** Red Cards
- BC** Blue Cards
- 2m** 2 Minute Suspensions
- UP** Unassigned Position

